



## Data Sheet CODESYS Modbus TCP Server SL

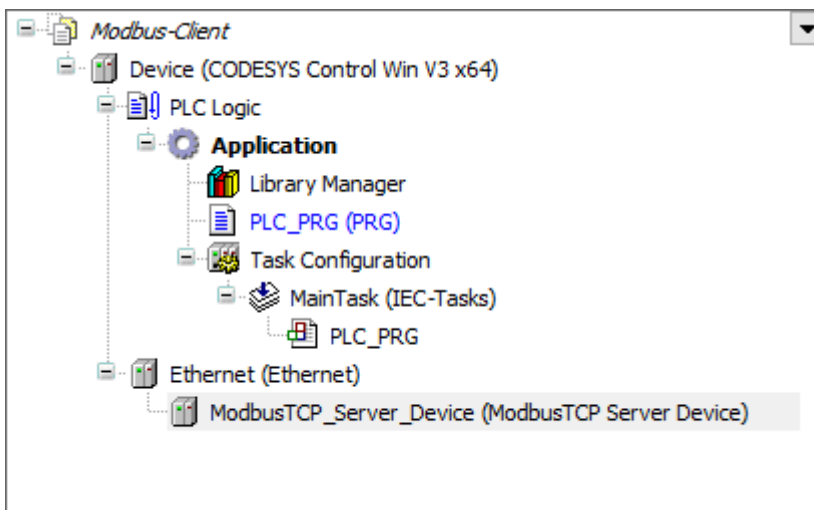
The CODESYS Modbus TCP Server enables a controller to act as a Modbus TCP Server that is programmable with the CODESYS Development System.

### Product description

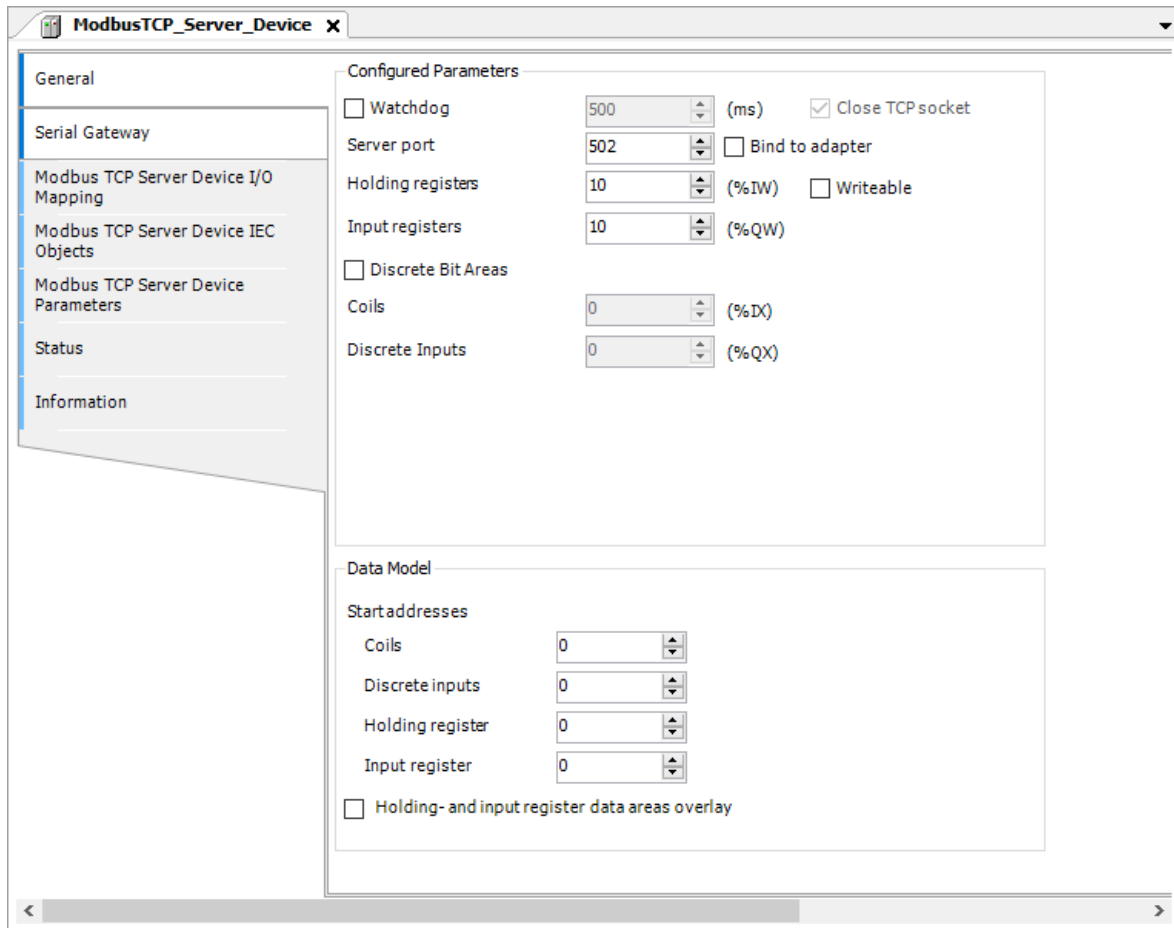
The CODESYS Modbus TCP Server enables a CODESYS-capable controller to register as a Modbus TCP Server in a Modbus network. For CODESYS-compatible controllers can use this functionality, they require a COM port for communication. The CODESYS Modbus TCP Server product integrates this functionality seamlessly into the existing controller. During project engineering, the Modbus TCP Server is included in the device tree of an IEC 61131-3 project. Then configuration is performed directly in the development environment.

### Architecture

Typical structure in the device tree:



Editor:



## General information

### Supplier:

CODESYS GmbH  
 Memminger Strasse 151  
 87439 Kempten  
 Germany

### Support:

Technical support is not included with this product. To receive technical support, please purchase a CODESYS Support Ticket.

<https://support.codesys.com>

### Item:

CODESYS Modbus TCP Server SL

### Item number:

2303000020

### Sales/Source of supply:

CODESYS Store  
<https://store.codesys.com>

### Included in delivery:

- License key

## System requirements and restrictions

<b>Programming System</b>	CODESYS Development System V3.5.17.0 or higher
<b>Runtime System</b>	CODESYS Control V3.5.12.0 or higher
<b>Supported Platforms/ Devices</b>	Note: Use the project "Device Reader" to find out the supported features of your device. "Device Reader" is available for free in the CODESYS Store.
<b>Additional Requirements</b>	<ul style="list-style-type: none"> <li>• CODESYS Control runtime system on the device with SysSocket component</li> <li>• Available Ethernet adapter on the device</li> </ul>
<b>Restrictions</b>	/-
<b>Licensing</b>	



Single device license: The license can be used on the target device/PLC on which the CODESYS runtime system is installed.

Licenses are activated on a software-based license container (soft container), which is permanently connected to the controller. Alternatively, the license can be stored on a CODESYS Key (USB dongle). By replugging the CODESYS Key, the license can be used on any other controller.

---

**Required Accessories**

Optional: CODESYS Key

---

*Note: Technical specifications are subject to change. Errors and omissions excepted. The content of the current online version of this document applies.*

Creation date: 2024-05-13